



IUCN
The World Conservation Union



Cargill
嘉吉



TRAFFIC
TRAFFIC

bio-era



The Bay and Paul Foundations

IDEXX
LABORATORIES



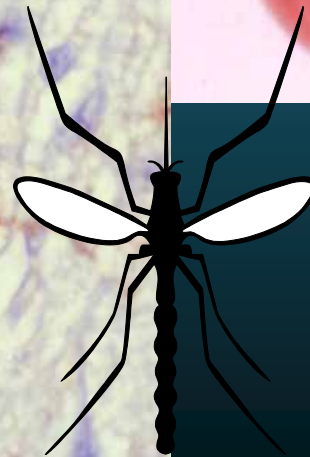
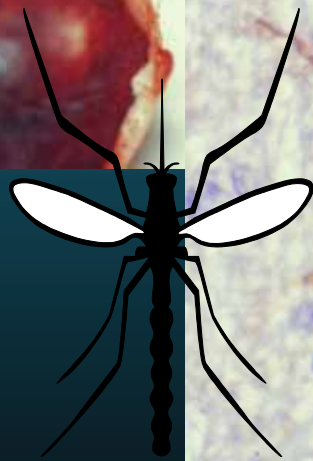
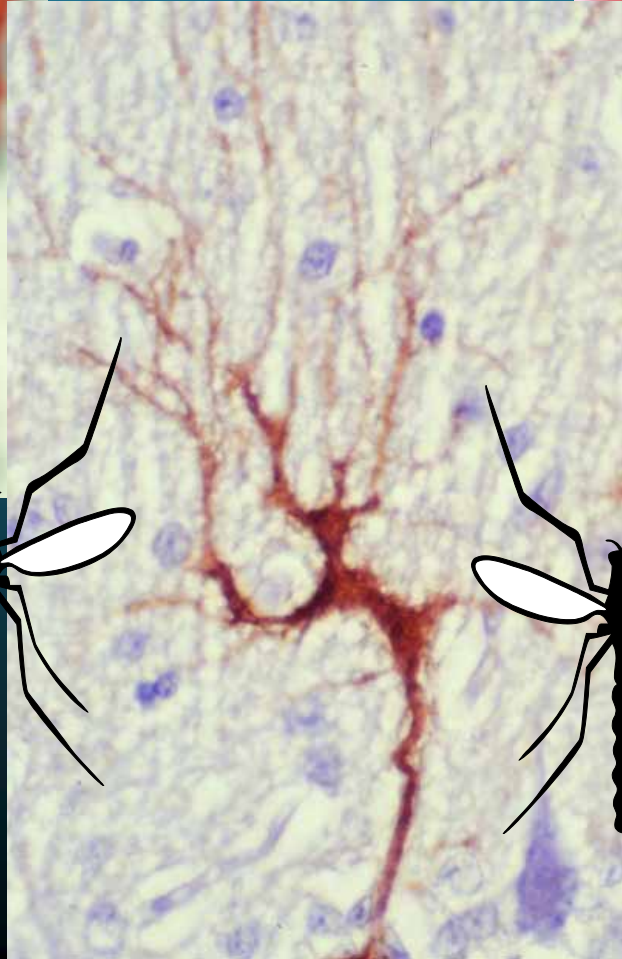
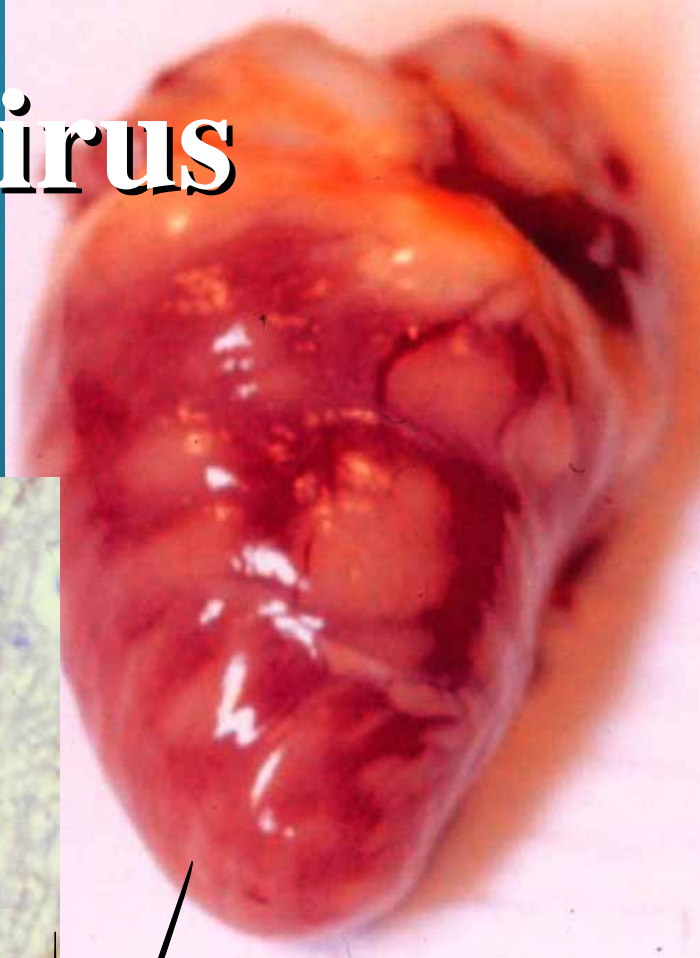
one world • one health



one world • one health

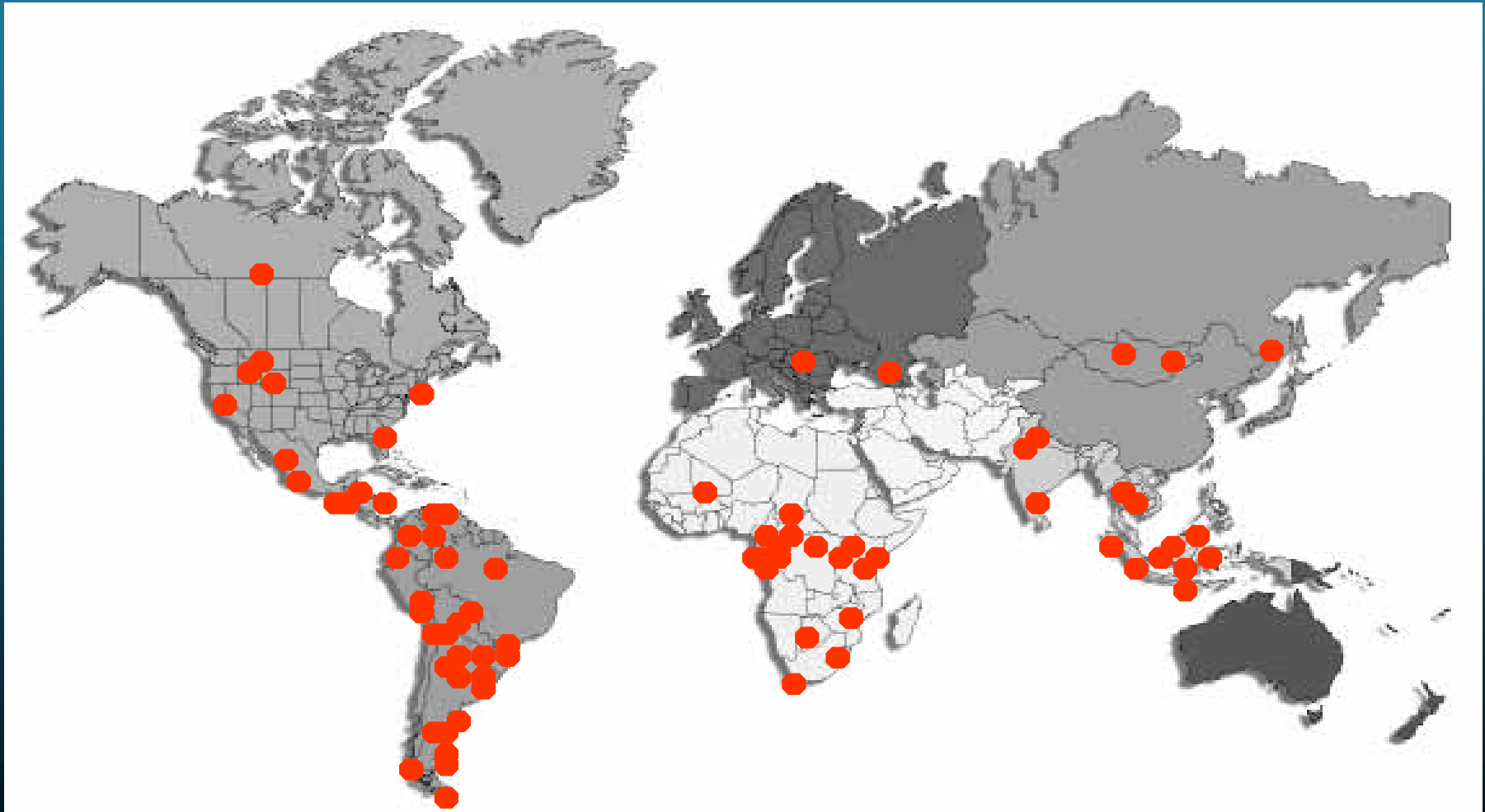


West Nile Virus





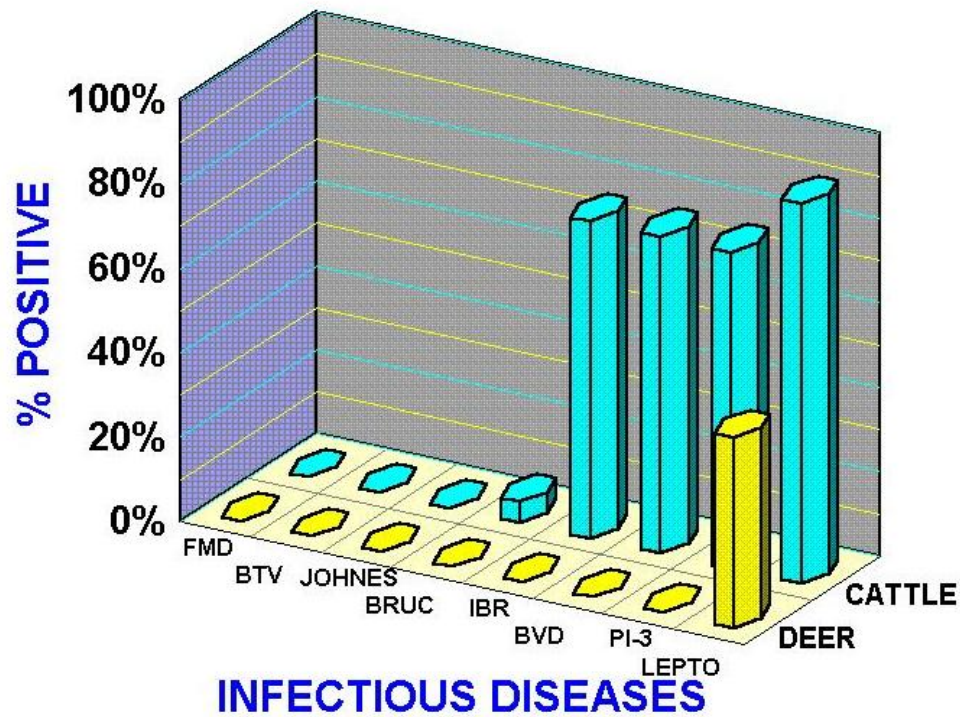
Field Veterinary Program



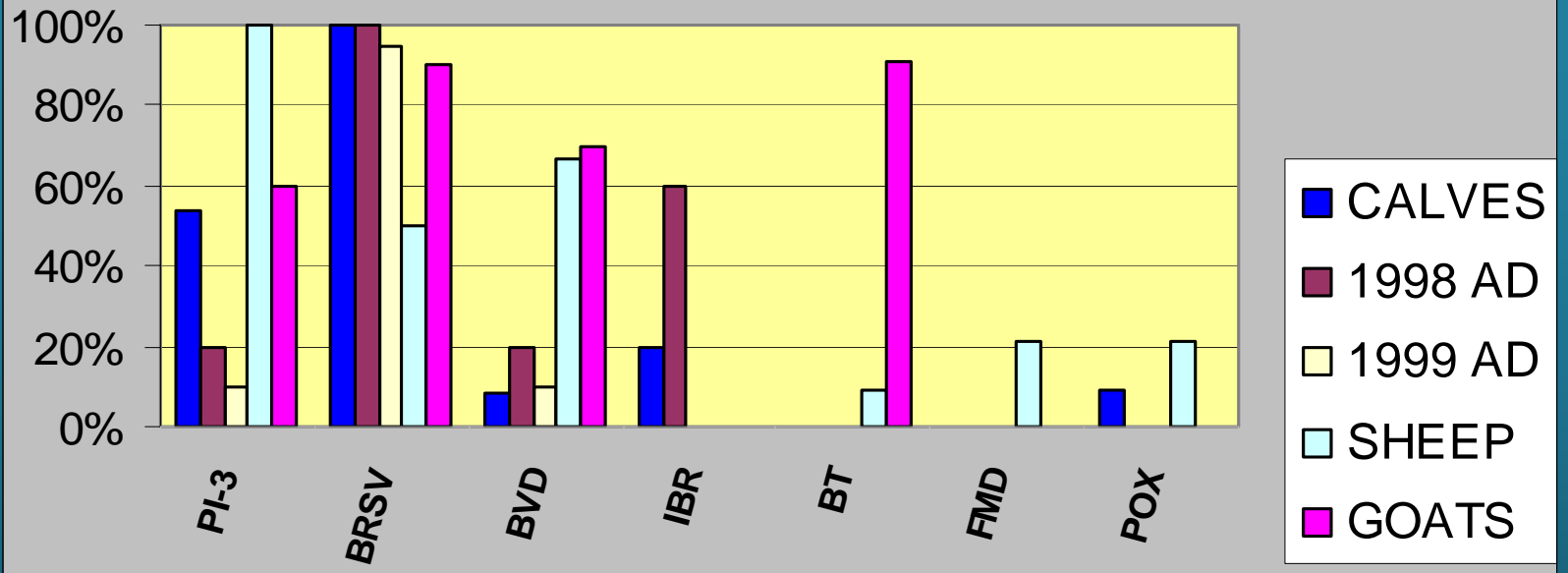


Steve Osofsky, 2004











W.B. Karesh, 2005



W.B. Karesh, 2005



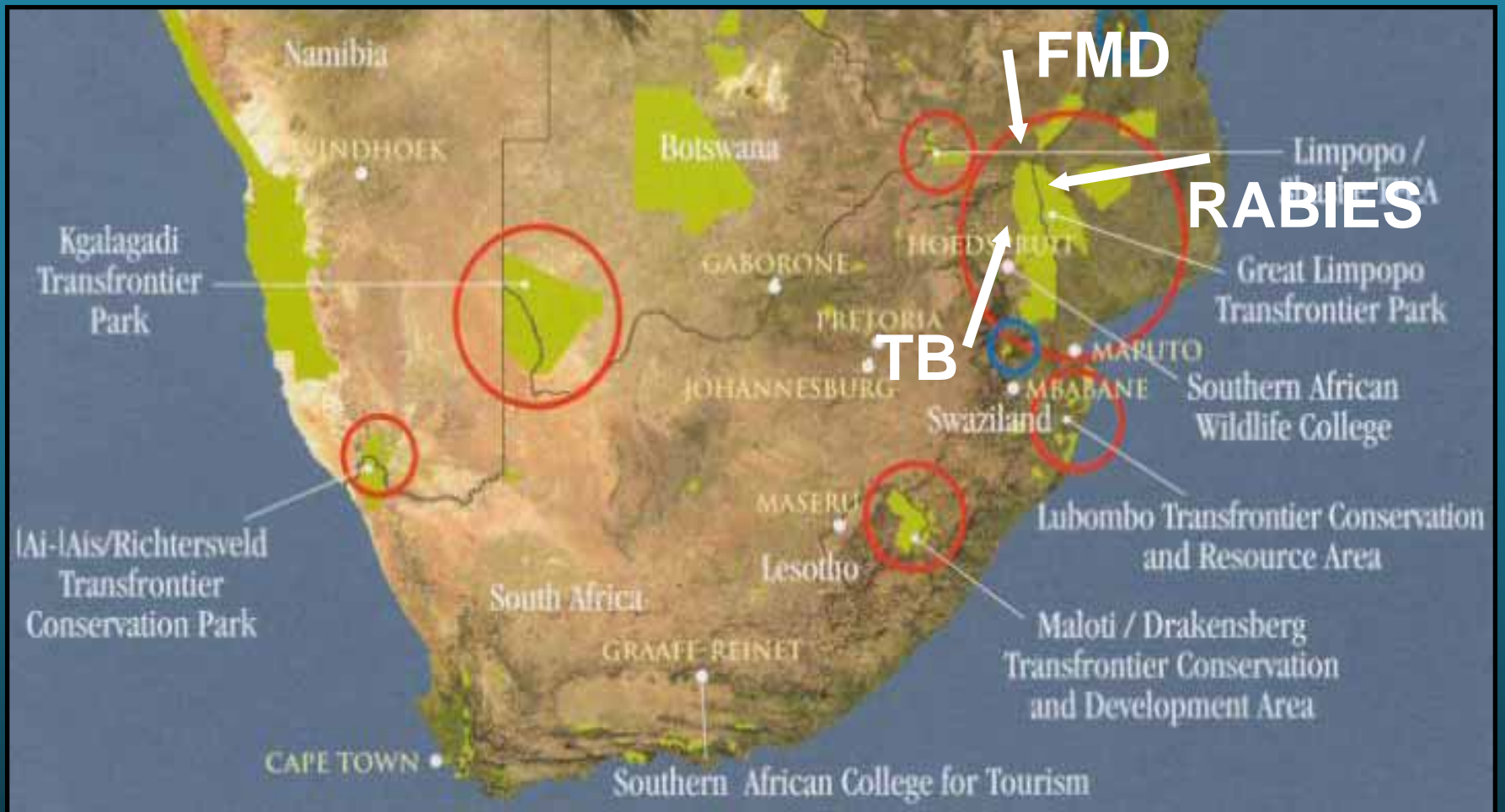
W.B. Karesh, 2005

[Home](#) > [News](#) > World News

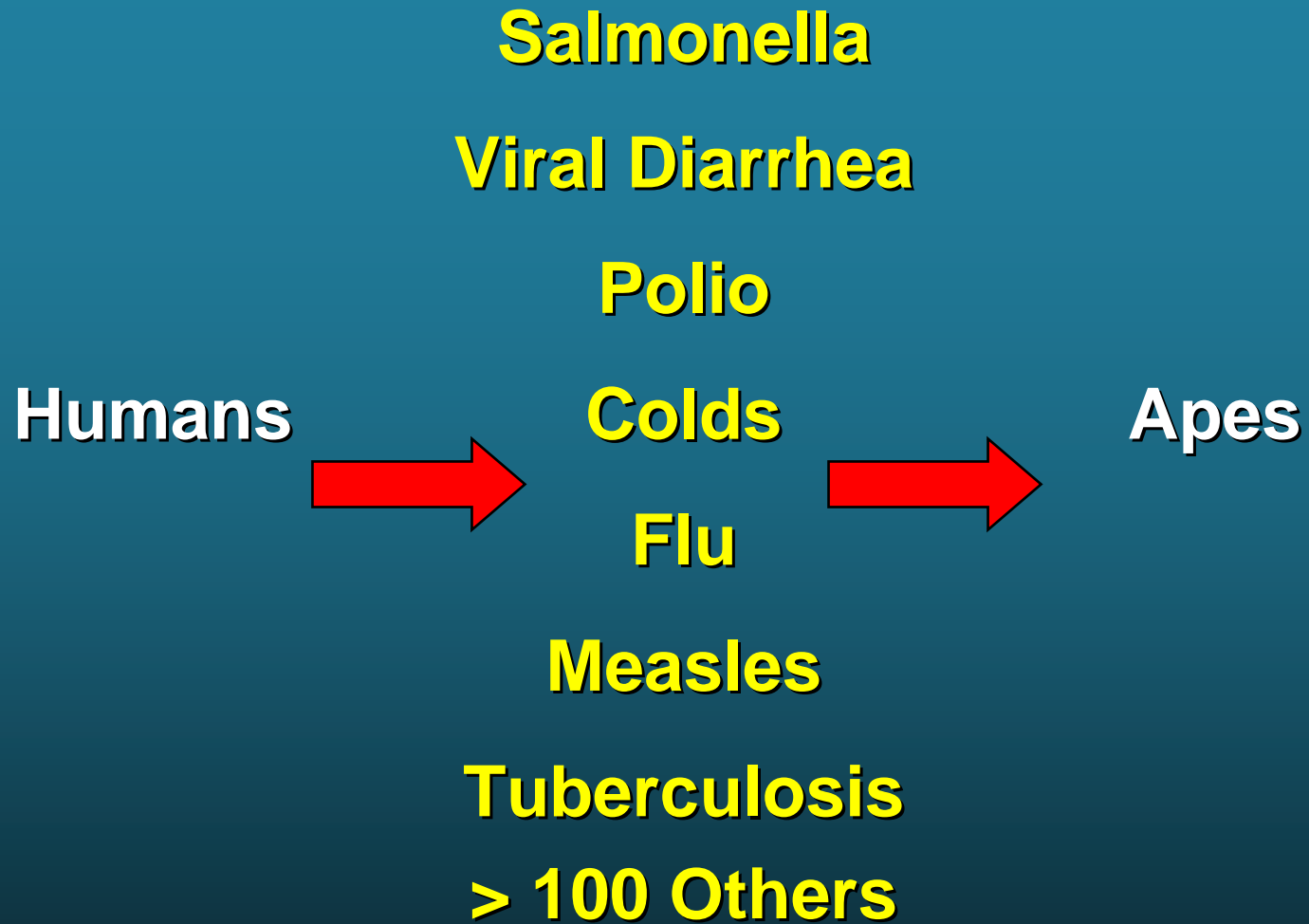
Posted on 04 Nov 2005 # ANI

Wild whooper swan to yield human pandemic influenza vaccine

Infectious Disease	Affects Wildlife	Affects Domestic Animals	Affects Humans Directly	Affects Human Livelihoods Indirectly
Brucellosis	X	X	X	X
Canine Parvovirus	X	X		
Chagas	X	X	X	
Distemper	X	X		
Foot and Mouth Disease	X	X		X
Leishmania	X		X	
Leptospirosis	X	X	X	
Rabies	X	X	X	X
Scabies	X	X	X	
Toxoplasmosis	X	X	X	







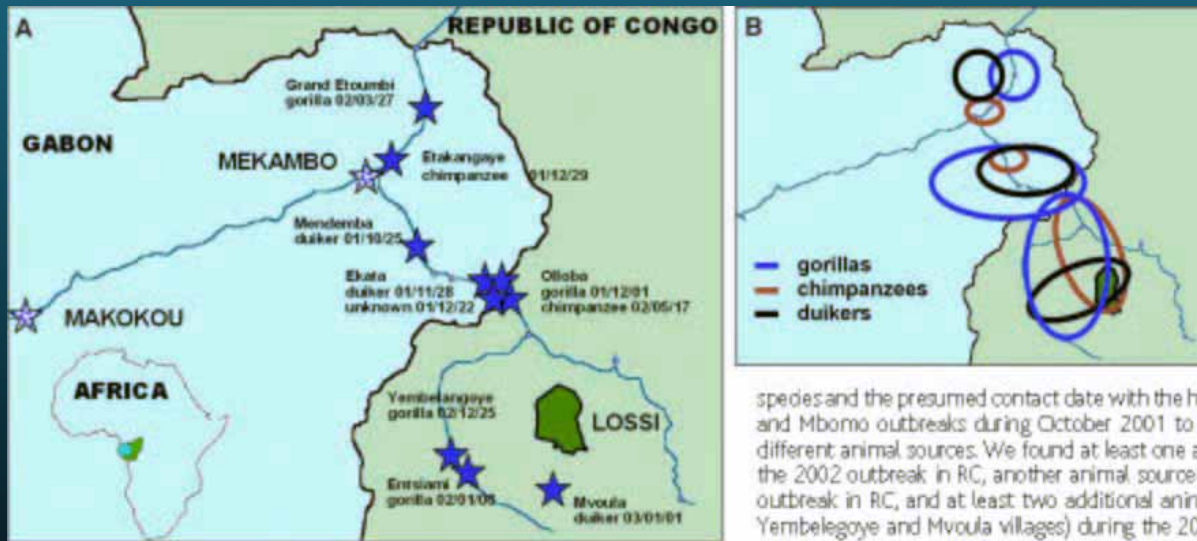


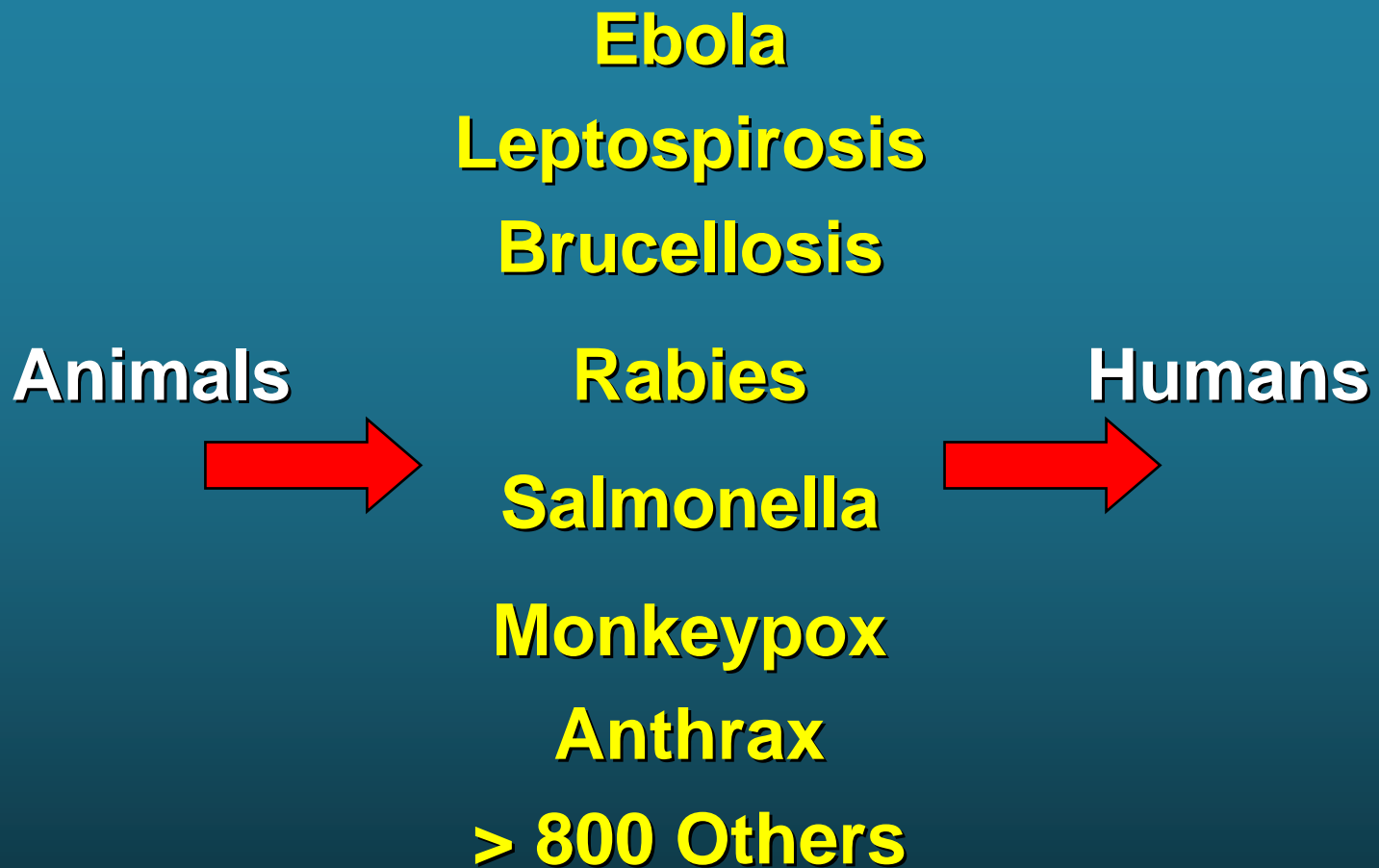
Disease outbreak Investigations & Post-mortem exams



Multiple Ebola Virus Transmission Events and Rapid Decline of Central African Wildlife

SCIENCE, Jan. 16, 2004

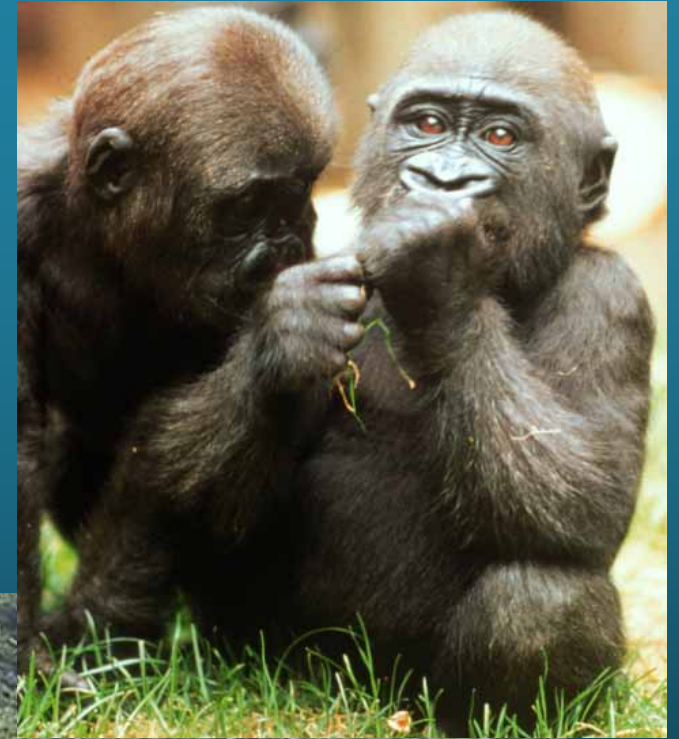












**Healthy
People**

**Healthy
Animals**







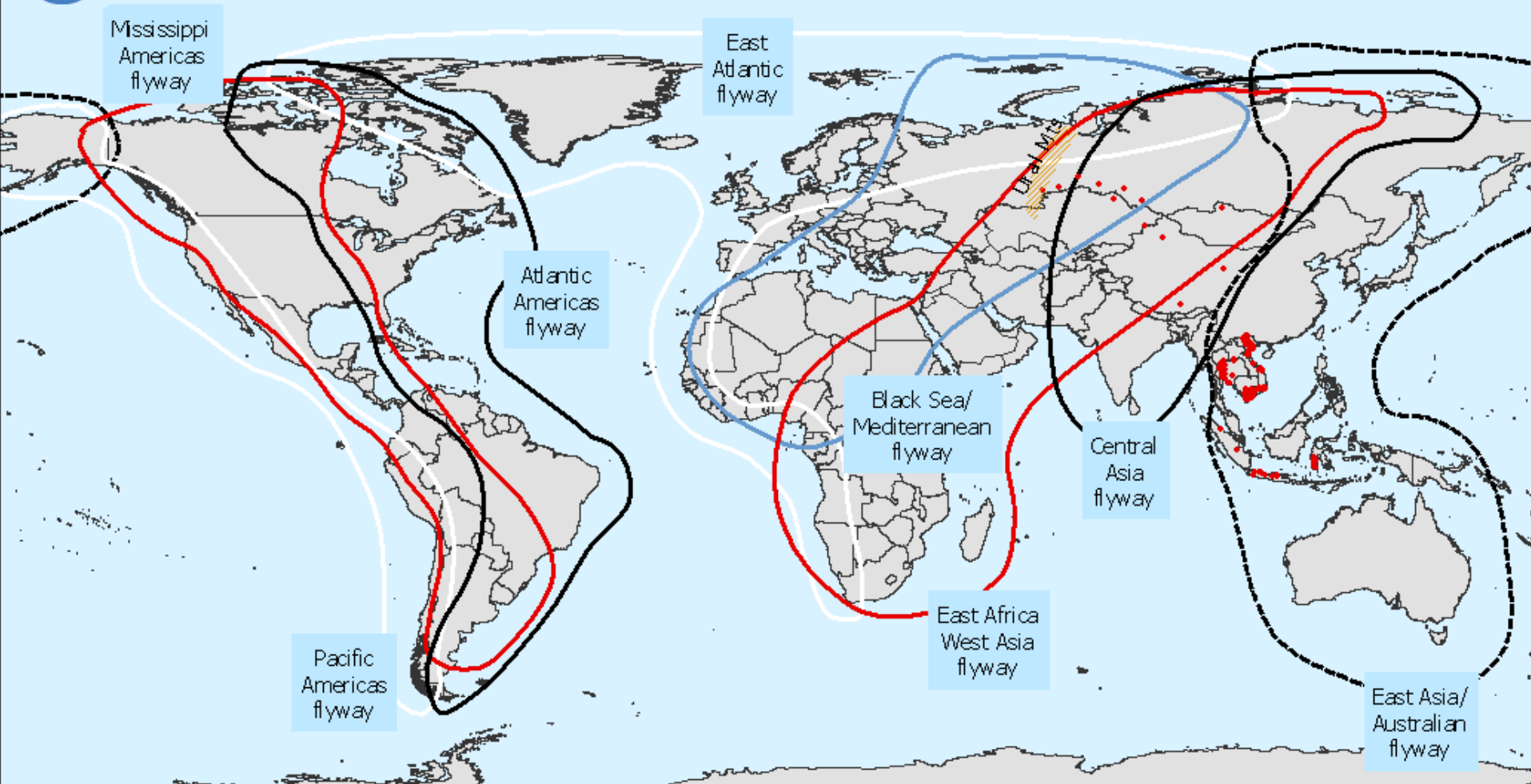






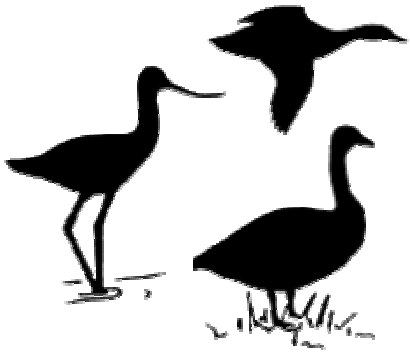
H5N1 outbreaks in 2005 and major flyways of migratory birds

Situation on 30 August 2005

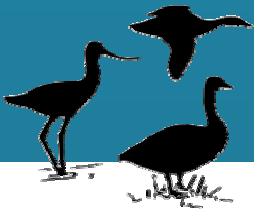


• Districts with H5N1 Outbreaks since January 2005

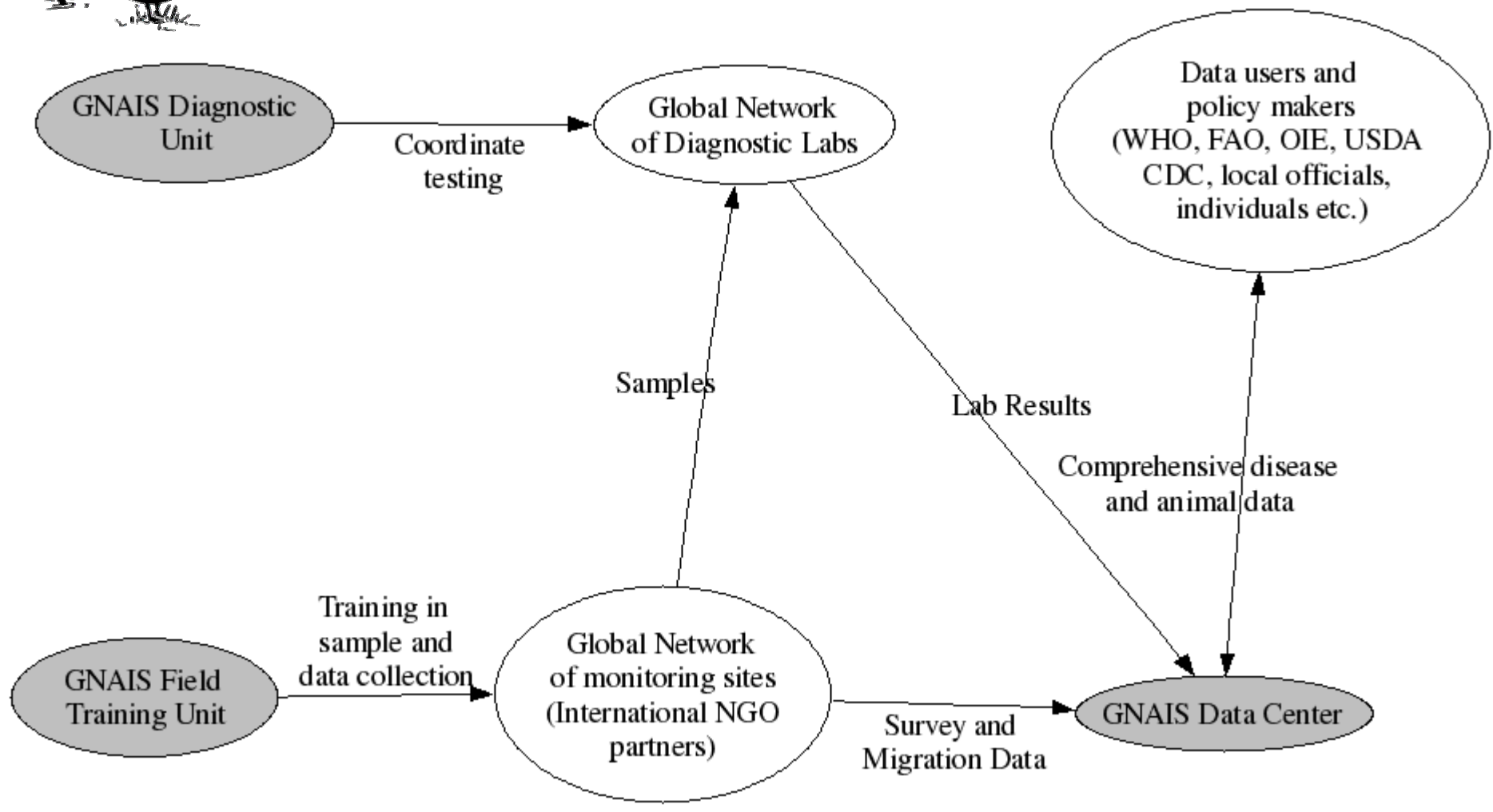
Sources: AI outbreaks: OIE, FAO and Government sources.
Flyways: Wetlands International



Global Network for Avian Influenza Surveillance



GNAIS in Practice





IUCN
The World Conservation Union



Cargill
嘉吉



TRAFFIC
TRAFFIC

bio-era



The Bay and Paul Foundations

IDEXX
LABORATORIES



one world • one health